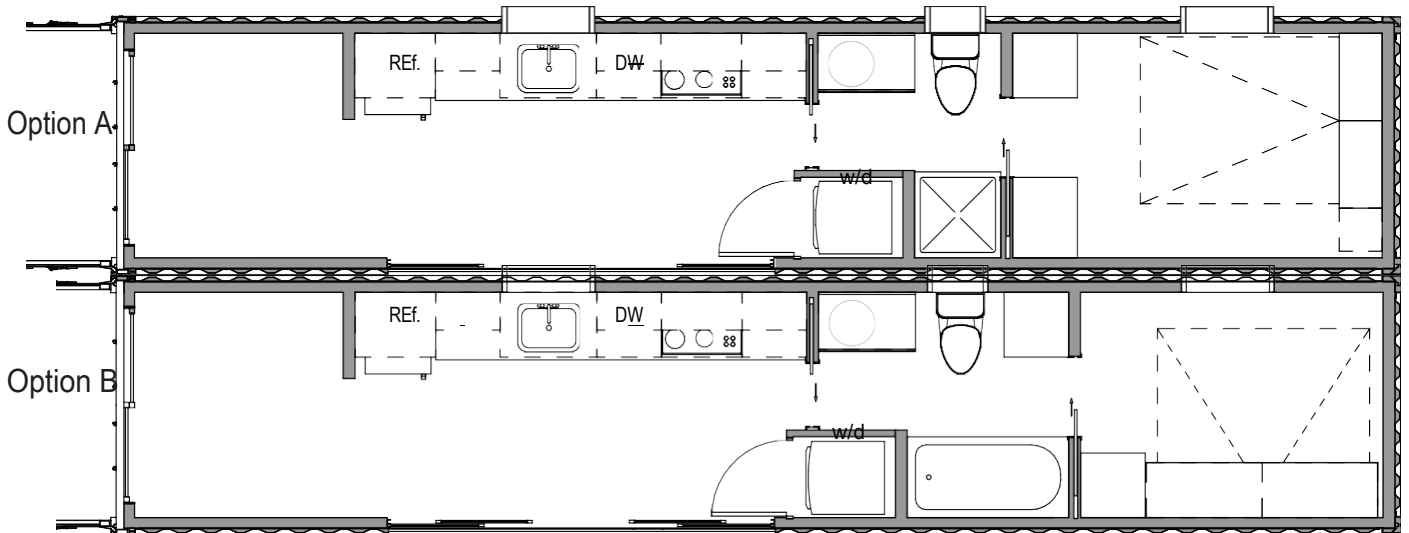
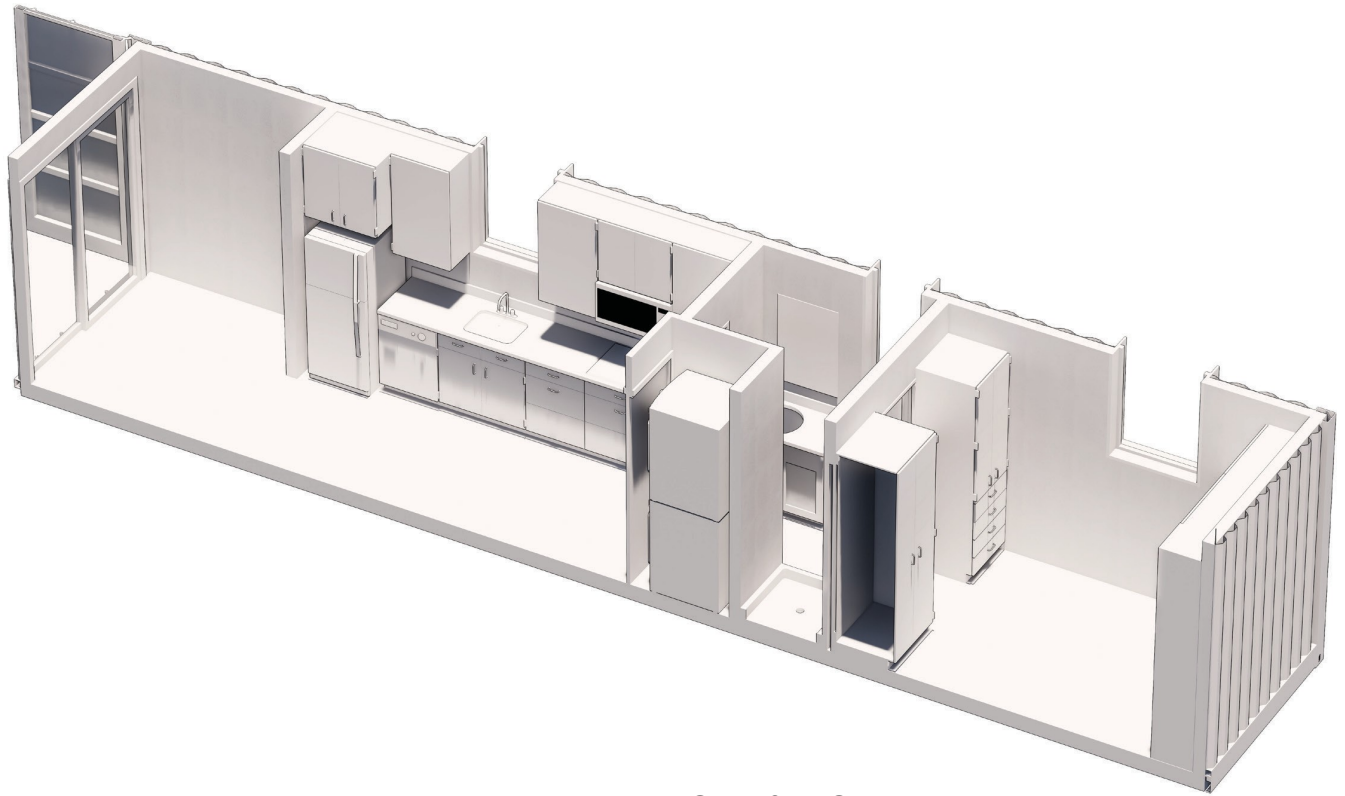


# THE HOMECUBE

## RHINO CUBED'S 320FT EXPANDED SOLUTION



\* graphic representations are computer generated, product may differ in real life.



#### **KITCHEN**

- Convection microwave
- 24" Fridge & sink
- Four burner cooktop (range option)

#### **BATHROOM**

- 32" shower or tub option
- Low-flow toilet & sink
- Stacked Washer/Dryer (optional)

#### **LIVING**

- Queen size Murphy bed
- Closet & drawer storage

#### **YOUR CHOICES**

- Cabinet & wall bed finishes
- Appliance finish
- Counter & ceiling color
- Shipping container color
- Modern or rustic paint & lighting package

#### **ALL CUBES INCLUDE**

- "One-trip" High Cube container, naturally bug-proof, waterproof, rodent-proof & fire resistant
- Built to 2012 IRC standards
- ISO 9001 and 14001 compliant fabrication
- Insulation: Closed cell spray foam walls, roof & floors up to R50
- Windows: Vinyl with low e & solar heat gain coatings
- 1/4" steel window bucks & sculpted steel rhino horn
- Flooring: Hickory hardwood
- Electrical: Full electrical infrastructure, LED lighting, Mini-split HVAC
- Plumbing: Full plumbing infrastructure

Contact for price

THE **HOMECUBE**

RHINO CUBED'S 320FT

EXPANDED SOLUTION